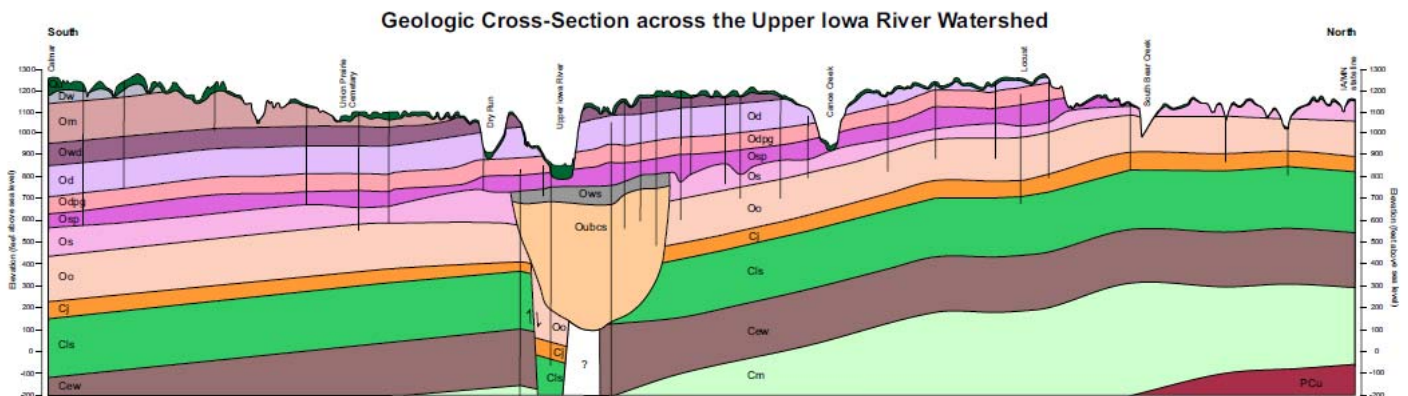


# GEOLOGIC MAPPING FOR WATER QUALITY PROJECTS IN THE UPPER IOWA RIVER WATERSHED

Technical Information Series No. 54



Iowa Geological and Water Survey  
Robert D. Libra, State Geologist

Iowa Department of Natural Resources  
Roger L. Lande, Director  
September 2011



# **Geologic Mapping for Water Quality Projects in the Upper Iowa River Watershed**

**Iowa Geological and Water Survey  
Technical Information Series 54**

C. F. Wolter, R. M. McKay, H. Liu, M. J. Bounk, R. D. Libra

Supported in part by the U.S. Geological Survey - National Cooperative  
Geologic Mapping Program and the Iowa Department of Natural Resources –  
Watershed Improvement Program through the US EPA Nonpoint Source  
Pollution Program

September 2011

**Iowa Geological and Water Survey  
Robert D. Libra, State Geologist**

**Iowa Department of Natural Resources  
Roger L. Lande, Director**

## TABLE OF CONTENTS

ABSTRACT . . . . .	1
INTRODUCTION – GROUNDWATER AND WATERSHEDS . . . . .	2
UPPER IOWA RIVER WATERSHED . . . . .	2
BEDROCK GEOLOGY . . . . .	4
Previous Geologic Mapping and Data Sources . . . . .	4
Bedrock Topography (Elevation of the Bedrock Surface). . . . .	4
Bedrock Stratigraphy, Aquifers & Aquitards, and Map Units . . . . .	5
Structure of the Bedrock Formations . . . . .	7
Description of Map Units . . . . .	8
KARST MAPPING . . . . .	14
Karst and Water Quality. . . . .	14
Sinkhole and Spring Mapping Methods . . . . .	15
Sinkhole and Spring Mapping Results . . . . .	16
Losing Stream Mapping. . . . .	16
Geologic Associations . . . . .	18
APPLICATION TO WATERSHED PLANNING . . . . .	19
ACKNOWLEDGEMENTS . . . . .	21
REFERENCES . . . . .	22
APPENDIX A – Geologic Summary of Waterloo Creek Watershed, Allamakee County, Iowa . . . . .	26
APPENDIX B – Geologic Summary of Silver Creek Watershed, Howard and Winneshiek counties, Iowa . . . . .	32

## LIST OF FIGURES

<b>Figure 1.</b> Location of the Upper Iowa River watershed . . . . .	3
<b>Figure 2.</b> Bedrock topography, Upper Iowa River watershed . . . . .	5
<b>Figure 3.</b> Stratigraphic sequence within the Upper Iowa River watershed . . . . .	6
<b>Figure 4.</b> Elevation of the St. Peter Sandstone surface in the Upper Iowa River watershed.	7
<b>Figure 5.</b> Bedrock geologic map of the Upper Iowa River watershed . . . . .	8
<b>Figure 6.</b> Geologic cross-section of the Upper Iowa River watershed . . . . .	9
<b>Figure 7.</b> Elevation of the Decorah Shale in the Upper Iowa River watershed . . . . .	11
<b>Figure 8.</b> Depth to the top of the Decorah Shale, Upper Iowa River watershed . . . . .	12
<b>Figure 9.</b> Elevation of the top of the Maquoketa Formation, Upper Iowa River watershed.	13
<b>Figure 10.</b> Depth to the top of the Maquoketa Formation, Upper Iowa River watershed . . . . .	13
<b>Figure 11.</b> Land-use, karst, and water quality relationships (illustration courtesy of the Southeast Minnesota Water Resources Board) . . . . .	15
<b>Figure 12.</b> Locations of sinkholes in the Upper Iowa River watershed . . . . .	17
<b>Figure 13.</b> Location of springs in the Upper Iowa River watershed . . . . .	17
<b>Figure 14.</b> Comparison of NRCS, LiDAR/historical photography, and field-mapped sinkholes . . . . .	18
<b>Figure 15.</b> Location of losing stream reaches in the Upper Iowa River watershed . . . . .	20

## LIST OF TABLES

<b>Table 1.</b> Number and density of karst features by geologic unit . . . . .	19
---	----